

STEPsaver

SOFTWARE

Add the convenience of remote access to your environmental control allowing you to manage your greenhouse and monitor conditions from your Smartphone or computer. STEPsaver provides a single view of all of your greenhouse zones and offers advanced data logging and analysis tools to help you manage your crop.

STEPsaver as a Productivity Tool

- Multiple Document Interface allows you to view and cross reference information like setpoints, or make comparisons between zones
- Allows for remote consultation and training
- Provides an arena for learning full capabilities of your VersiSTEP or EnviroSTEP
- STEPsaver's powerful tools help you view, interpret and manage greenhouse climate data and settings at the control or remotely
- View conditions for the entire greenhouse range at a glance
- Allows you to see and change the settings for any controller in any zone
- Not limited to a single user/computer. No extra charge or subscription fees for sites with a Local Area Network
- Remote access allow you to monitor and change greenhouse conditions from your Smartphone, tablet or computer
- STEPsaver Imaging provides a comprehensive snapshot of settings so you can replicate previous success

STEPsaver as an Analysis Tool

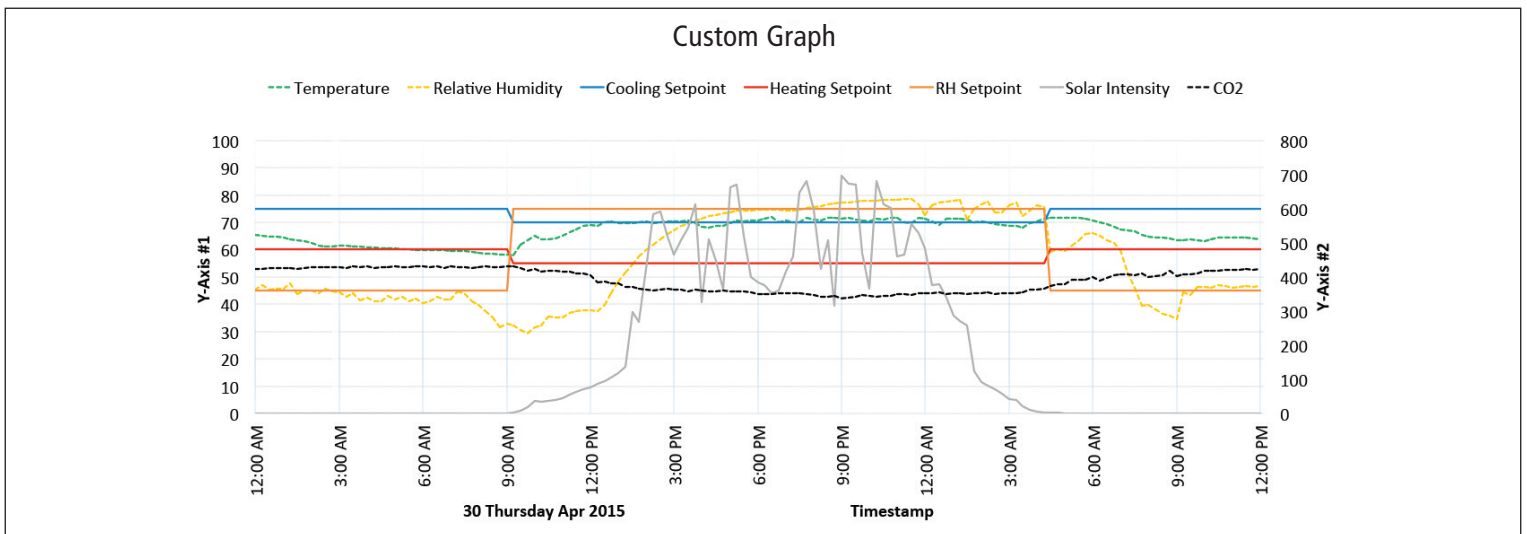
- STEPsaver expands the graphing power of your Wadsworth integrated control
- Analyze sensors and equipment usage
- Compare data between zones
- Filter data to pinpoint every entry, or broaden view to a few points that represent hours or an entire day. Spot long-term trends by hiding detail
- Create custom graphs to analyze sensor readings, equipment use and weather
- Download data
- Presentation quality printed reports

STEPsaver as a Management Tool

- Transfer and store data
- Built-in reporting tools
- Monitor and manage your energy consumption
- Confirm that systems are running as expected
- View the average temperature and humidity for day, night and DIF
- Manage access to settings with user names and passwords

SYSTEM REQUIREMENTS

- Windows 7, Windows 8 (32 and 64 bit) and Windows 10
- 4 GB RAM – 16 GB hard disk space
- Compatible with the EnviroSTEP or VersiSTEP controls



To find out more call 800.821.5829, email sales@wadsworthcontrols.com or visit www.wadsworthcontrols.com