

STEP Up Control

Imagine a controller that offers simple, flexible climate management and excellent results. With the STEP Up you'll see improved performance and increased profits. Like traditional staged controls, it's simple to use, and we've added a brighter LCD screen and an upgraded user interface, both designed to improve your experience.



FEATURES

- 6 stages: 2 heating and 4 cooling
 - Easily adjust the temperature for each stage
- New and improved back lit LCD screen
- 3 setpoint temperature periods – day, night and DIF; auto adjusts based on sunrise and sunset
- 2 modulating outputs control up to 2 vents or 1 vent and 1 curtain
- 1 analog output (0 to 10VDC or 4-20 milliamps) to control variable-speed fans and modulating valves
- Cycle timer
- Alarm output
- Password protection
- Easy to use push button interface
- Large menu-driven screen displays current temperature, time, date, grow weeks, equipment status, etc.
- Records the temperature in 15-minute increments and stores it for 7 days
- Includes logs and graphs data
- Logs high, low and average temperatures
- Timed override switches in addition to the manual override toggle switches
- Stores settings in the event of a power failure
- Optional humidity sensor
- Durable corrosion-resistant cabinet: 9.5" x 6.25" x 3.75" (241 x 159 x 95 mm)
- Removable terminal blocks for easier wiring
- Requires STEP Up Contactor Panel

INCLUDES

- Solar-guarded aspirated temperature sensor and 100' of cable
- Cable to connect STEP Up to contactor panel

ACCESSORIES

- Alarm Manager, Wireless Alarm Manager, Weather Guard
- STEP Up Compass software

ADVANTAGES

Easy to use

- It's as simple as pressing a button
- Wadsworth programs your control to operate your heating and cooling equipment

Improves crop quality

- 3 setpoint temperatures periods – day night and DIF
- Reduced night temperature mimics nature
- Use DIF to reduce stretch growth
- Accurate temperature improves crop quality and consistency
- Timed overrides allow you to fumigate

Reduces energy costs

- Government approved energy saving device
- Ramping allows for gentle transition between setpoint periods and saves fuel
- Ability to lower the greenhouse temperature at night when 80% of the heating occurs reducing energy consumption
- Using one central temperature sensor prevents heating and cooling from running simultaneously
- Solar-guarded, aspirated digital temperature sensor provides a more accurate temperature reading than traditional sensors
- For every 1° of improved accuracy, you reduce energy consumption by 3% (compiled by the US Department of Energy)

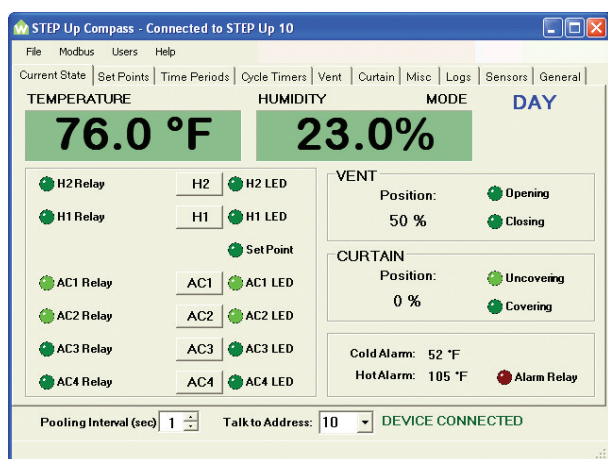
To find out more call 800.821.5829, email sales@wadsworthcontrols.com or visit www.wadsworthcontrols.com

 **WADSWORTH**
Control Systems

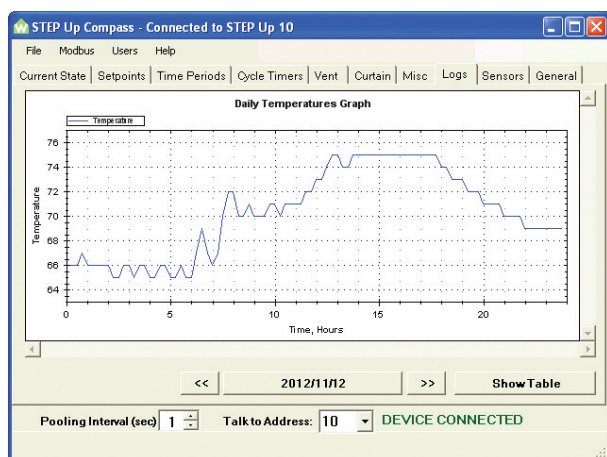
STEP Up Compass Software

With STEP Up Compass software,
more control means more choices

STEP Up Compass software is uniquely designed to integrate with a single or multiple STEP Up controllers, and allows three ways to adjust and track your greenhouse environment: the STEP Up control, your PC and on-the-go using your smartphone.



Main menu shows current conditions.



Display of current day's temperatures in 15-minute increments.

FEATURES

- Allows remote access and management of a single or multiple STEP Up controllers by PC and your smartphone
- Displays historical data in two formats: as tabs or graphs
- Stores snapshots of current settings – useful for historic comparisons, restoring settings and a back-up for current settings
- Compare data for specific time periods to fine tune crop environments for peak performance and energy savings
- Temperature tracking in 15-minute increments
- Instinctive autodiscovery feature scans the system to locate all connected STEP Up controls
- Password protection includes three user levels with separate permissions: Administrator, Operator and User
- Compatible with Windows 10, Windows 8 and Windows 7 in both 32 and 64 bit
- Requires available USB port

To find out more call 800.821.5829, email sales@wadsworthcontrols.com
or visit www.wadsworthcontrols.com

 **WADSWORTH**
Control Systems