

EnviroSTEP

INTEGRATED CONTROL

Wadsworth designed this advanced integrated controller to offer flexibility, functionality and a friendly user interface. That's why it's our number one selling control. And it bears the UL (Underwriters Laboratory) mark, your assurance of regulatory approval and safety.



FEATURES

- Single zone control can connect up to 100 zones
- New and improved back lit LED screen
- 4 analog outputs (0 to 10VDC) to control variable-speed fans and modulating valves
- 3 setpoint periods – day, night and DIF
- 12 relay outputs with manual override switches
- Ramping allows for gentle transition between setpoint periods and saves fuel
- 2 analog input channels for connecting light, CO₂, RH and temperature sensors
- 4 digital detector channels sense precipitation, wind speed and wind direction
- Records the status of all inputs and outputs in 15-minute increments
- Alarm outputs: temperature, RH and power failure
- Replaceable 10 amp DPDT relays can operate a wide variety of equipment. These relays reduce the cost of your contactor panel
- Cabinet measures 16" x 16" x 5" (406 x 406 x 127 mm)
Shipping weight 28 lbs / 13 kg
- Keypad for easy operation
- Durable corrosion-resistant cabinet with locking door protects your control
- Add STEP saver software for more powerful data storage, reporting and remote monitoring

REQUIRES

- Solar-shielded outdoor temperature sensor with 25' of cable

INCLUDED

- Aspirated Precision solar-guarded temperature and humidity sensor plus 100' of cable

The crucial importance of controlled environment agriculture for food security and resiliency makes the EnviroSTEP control managing our greenhouse more important than ever.

MURAT KACIRA
Director, Controlled Environment Agriculture Center
Professor, Biosystems Engineering Department
The University of Arizona

The EnviroSTEP is very friendly. My experience is in outdoor farming, so the greenhouse is something new. I'm treating it as a laboratory with crops like frost tolerant greens and ways to provide food security. The cut flower side of my business will be included in the greenhouse. Each crop has its own climate needs and this where tweaking the settings and finding the optimal conditions is important.

NIKKI WILSON
Owner, Red Tail Farms
Durango, CO

To find out more call 800.821.5829, email sales@wadsworthcontrols.com or visit www.wadsworthcontrols.com

STEPsaver

SOFTWARE

Add the convenience of remote access to your environmental control allowing you to manage your greenhouse and monitor conditions from your Smartphone or computer. STEP saver provides a single view of all of your greenhouse zones and offers advanced data logging and analysis tools to help you manage your crop.

STEPsaver as a Productivity Tool

- Multiple Document Interface allows you to view and cross reference information like setpoints, or make comparisons between zones
- Allows for remote consultation and training
- Provides an arena for learning full capabilities of your VersiSTEP or EnviroSTEP
- STEP saver's powerful tools help you view, interpret and manage greenhouse climate data and settings at the control or remotely
- View conditions for the entire greenhouse range at a glance
- Allows you to see and change the settings for any controller in any zone
- Not limited to a single user/computer. No extra charge or subscription fees for sites with a Local Area Network
- Remote access allow you to monitor and change greenhouse conditions from your Smartphone, tablet or computer
- STEP saver Imaging provides a comprehensive snapshot of settings so you can replicate previous success

STEPsaver as an Analysis Tool

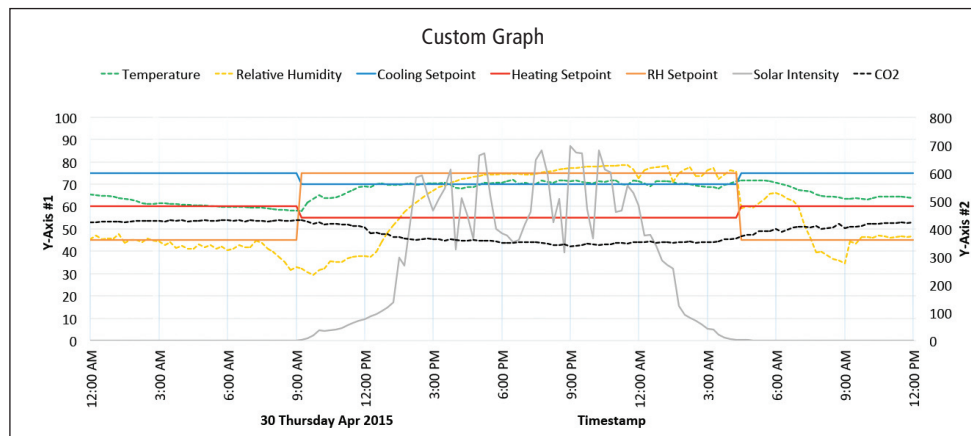
- STEPsaver expands the graphing power of your Wadsworth integrated control
- Analyze sensors and equipment usage
- Compare data between zones
- Filter data to pinpoint every entry, or broaden view to a few points that represent hours or an entire day. Spot long-term trends by hiding detail
- Create custom graphs to analyze sensor readings, equipment use and weather
- Download data
- Presentation quality printed reports

STEPsaver as a Management Tool

- Transfer and store data
- Built-in reporting tools
- Monitor and manage your energy consumption
- Confirm that systems are running as expected
- View the average temperature and humidity for day, night and DIF
- Manage access to settings with user names and passwords

SYSTEM REQUIREMENTS

- Windows 7, Windows 8 (32 and 64 bit) and Windows 10
- 4 GB RAM – 16 GB hard disk space
- Compatible with the EnviroSTEP or VersiSTEP controls



To find out more call 800.821.5829, email sales@wadsworthcontrols.com or visit www.wadsworthcontrols.com