

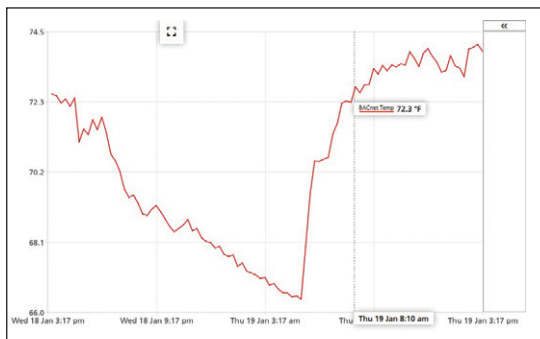
BACnet Read-Only

Seed and BACnet devices can now exchange information allowing you to view multiple sources through a single interface.

Seed can read external BACnet devices, and BACnet devices can view the controller's sensors and equipment. Seed and BACnet devices must be on a shared network.

- Seed uses BACnet IP to communicate with other devices
- View properties of any BACnet device on the network
- Graph data from BACnet Analog/Binary Inputs and Outputs
- Use a BACnet sensor as a sensor in Seed
- View Seed's sensors, equipment, and setpoints over BACnet
- Receive Seed alarms over BACnet
- Integrates with building management systems (BMS)

Graph of external BACnet temperature sensor



- BACnet devices can be mapped into Seed:
 - Analog Input -> Sensors
 - Binary Input -> Detector
 - Analog Output -> Modulating or 2 Relay Equipment
 - Binary Output -> 1 Relay Equipment
- Seed can be mapped to BACnet devices:
 - Sensors and Sensor Pools -> Analog Input
 - Detectors -> Binary Input
 - 1 Relay Equipment -> Binary Output
 - 2 Relay and Modulating Equipment -> Analog Output
 - Active Setpoints -> Analog Value
 - Alarms -> Multi State Inputs
 - Alarm Groups -> Notification Class

External BACnet binary output

Hardware	Sensor Pools	Equipment Groups	Schedules	Influences	BACnet	Modbus
Device ID -> 37	Device Name -> Seed	Description -> Seed Controller	Vendor Name -> Wadsworth Control Systems	Address -> 192.168.0.55		
277050	DEV277050	Functional Devices BACnet RIB	Functional Devices, Inc	2001:50		

BACnet Objects:

Object ID ->	Object Name	Description	Name
binaryInput:1	B11	Binary Input 1	[UNUSED]
binaryOutput:1	BO1	Binary Output 1	Binary Output 1
device:277050	DEV277050	Functional Devices BACnet RIB	-

Properties:

Property ->	Value
Active Text	Active
Description	Binary Output 1
Event State	Normal
Inactive Text	Inactive
Minimum Off Time	0
Minimum On Time	60
Object Identifier	[Binary Output, 1]
Object Name	BO1
Object Type	Binary Output
Out Of Service	false
Polarity	Normal
Present Value	Inactive
Priority Array	[Null, Null, Null, Null, Null, Null, Null, Null, Null, Null, Null, Null, Null, Null]
Reliability	No Fault Detected
Relinquish Default	Inactive
Status Flags	[]

Find out more



800.821.5829 sales@wadsworthcontrols.com
www.wadsworthcontrols.com