

# STEP Up Control

*Imagine a controller that offers simple, flexible climate management and excellent results. With the STEP Up you'll see improved performance and increased profits. Like traditional staged controls, it's simple to use, and we've added a brighter LCD screen and an upgraded user interface, both designed to improve your experience.*



## FEATURES

- 6 stages: 2 heating and 4 cooling
  - LED's on faceplate show active heating and cooling stage
  - Easily adjust the temperature for each stage
- Features stage delay function prevents moving through stages too quickly
- 3 setpoint temperature periods – day, night and DIF
- Allows user to drive to a specific setpoint or have a separate cooling and heating setpoint
- Auto adjust can also be time based
- 2 modulating outputs control up to 2 vents or 1 vent and 1 curtain
  - Modulating vent outputs can be set to specific % open or based on temperature
  - Vents can also pulse at full open or closed
  - Curtain output can cover for cooling and for heat retention
  - Option to crack curtain during day
- 1 analog output (0 to 10VDC or 4-20 milliamps) to control variable-speed fans and modulating valves
- Cycle timer
- Alarm output
- Large menu-driven screen displays current temperature, in F or C, time, date, grow weeks, equipment status and calibrate sensors
- Records the temperature in 15-minute increments and stores for 7 days
- Logs and graphs high, low and average temperatures
- Timed override switches in addition to the manual override toggle switches
- Stores settings in the event of a power failure
- Optional humidity sensor
- Durable corrosion-resistant cabinet: 9.5" x 6.25" x 3.75" (241 x 159 x 95 mm)
- Removable terminal blocks for easier wiring
- Requires STEP Up Contactor Panel

## INCLUDES

- Solar-guarded aspirated temperature sensor and 100' of cable
- Cable to connect STEP Up to contactor panel

## ACCESSORIES

- Sensaphone
- STEP Up Compass software

## ADVANTAGES

### Easy to use

- It's as simple as pressing a button
- Wadsworth programs your control to operate your heating and cooling equipment

### Improves crop quality

- 3 setpoint temperatures periods – day night and DIF
- Reduced night temperature mimics nature
- Use DIF to reduce stretch growth
- Accurate temperature improves crop quality and consistency
- Timed overrides allow you to fumigate

### Reduces energy costs

- Government approved energy saving device
- Ramping allows for gentle transition between setpoint periods and saves fuel
- Ability to lower the greenhouse temperature at night when 80% of the heating occurs reducing energy consumption
- Using one central temperature sensor prevents heating and cooling from running simultaneously
- Solar-guarded, aspirated digital temperature sensor provides a more accurate temperature reading than traditional sensors
- For every 1° of improved accuracy, you reduce energy consumption by 3% (compiled by the US Department of Energy)

Find out more



800.821.5829 [sales@wadsworthcontrols.com](mailto:sales@wadsworthcontrols.com)  
[www.wadsworthcontrols.com](http://www.wadsworthcontrols.com)

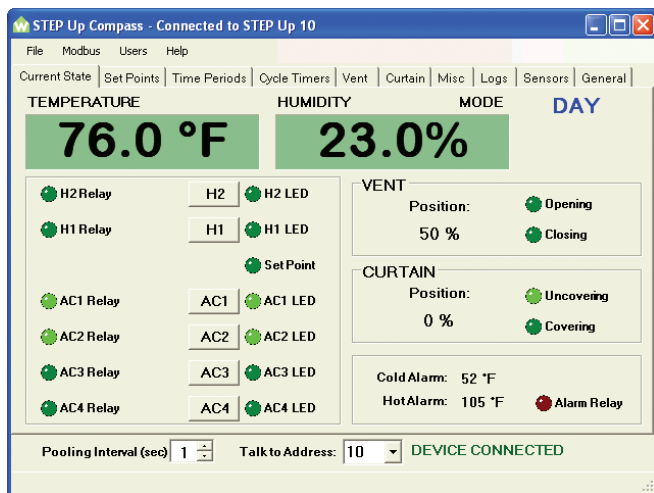
**WADSWORTH**  
Control Systems

# STEP Up Compass Software

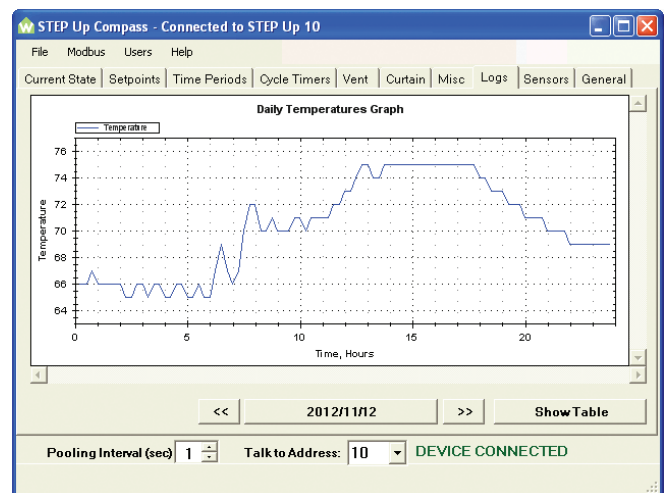
*With STEP Up Compass software, more control means more choices. STEP Up Compass software is designed to integrate with one or multiple STEP Up controllers, allowing you to adjust and track your greenhouse environment via the control or a PC.*

## FEATURES

- Allows remote access and management of a single or multiple STEP Up controllers by PC
- Displays historical data in two formats: as tabs or graphs
- Stores snapshots of current settings – useful for historic comparisons, restoring settings and a back-up for current settings
- Compare data for specific time periods to fine tune crop environments for peak performance and energy savings
- Temperature tracking in 15-minute increments
- Instinctive autodiscovery feature scans the system to locate all connected STEP Up controls
- Password protection includes three user levels with separate permissions: Administrator, Operator and User
- Compatible with Windows 10, Windows 8 and Windows 7 in both 32 and 64 bit
- Requires available USB port



Main menu shows current conditions.



Display of current day's temperatures in 15-minute increments.

Find out more



800.821.5829 [sales@wadsworthcontrols.com](mailto:sales@wadsworthcontrols.com)  
[www.wadsworthcontrols.com](http://www.wadsworthcontrols.com)

**WADSWORTH**  
Control Systems